

INPUT

Frequency

10 MHz

Level

+7 dBm \pm 6 dB into 50 ohms

OUTPUTS

RF Output	Frequency	Output Level (into 50 ohms)
A	100 MHz	+13 dBm \pm 2 dB
B	200 MHz	+13 dBm \pm 2 dB
C	400 MHz	+13 dBm \pm 2 dB

STABILITY

Aging (free-running)

1 x 10⁻⁶ first year

after 30 days operating, typical

5 x 10⁻⁷ second year, typical

3 x 10⁻⁷ per year thereafter, typical

Phase Noise L(f), dBc/Hz, typical, (free-running)

	100 MHz	200 MHz	400 MHz
10 Hz	-100	-93	-87
100 Hz	-130	-123	-117
1 kHz	-158	-151	-144
10 kHz	-174	-167	-160
100 kHz	-175	-168	-161
1 MHz	-176	-169	-162

Temperature Stability

\pm 5 x 10⁻⁷ free-running from 0 to +50°C
(Ref. +25°C)

Harmonics

-25 dBc

Sub-Harmonics

-60 dBc

PLL Divider Products

-60 dBc

Spurious

-80 dBc, excluding power
supply line related spurs

Phase Lock Alarm

TTL

Locked: +3.5 VDC to +5.2 VDC (Hi)

Out-of-Lock: +0.8 VDC max (Lo)

Phase Lock Voltage Monitor

Electrical tuning monitor pin supplied

MECHANICAL

Dimensions

4.4 x 4 x 1"

Connectors

RF Input/Outputs: SMA(f)

Power, Monitoring: Feed Thru Terminals

GND: Ground Turret

Packaging

Nickel-plated machined

aluminum housing – J2P-013

Mounting

Threaded inserts on base,

#2-56, 6 places

POWER REQUIREMENTS

Warm-Up Power

\leq 13 Watts for 5 minutes

Total Power

\leq 10 Watts at +25°C

Supply Voltage

+15 VDC \pm 5%

ADJUSTMENT

Loop BW

Target Bandwidth: \leq 10 Hz

Type 2 Loop

CRYSTAL

Type

100 MHz SC-cut (x2 x2)

OTHER

Label

Use conventional label with the
following information:

501-27336 (Current Rev.)

100M/200M/400M MXO-PLD

+15 VDC

Serial # - Date Code

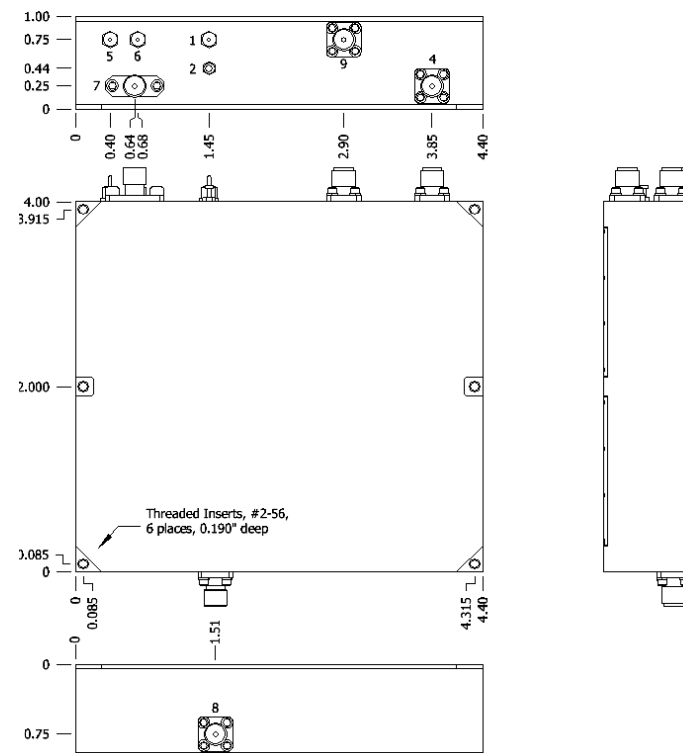
(Mark connectors with function)

Test Data

- Output Level
- Phase Noise – free-running
- Temperature Stability – free-running
- Harmonics, Subs, Products, Spurious
- Power – Warm-up and Total

REV	DATE	REVISION RECORD	DWN	AUTH
-	11-07-13	Initial Release	Liz	

J2P-013 MXO Connections	
Connector	Function
1	Supply Voltage
2	Ground, Case
4	RF Output C
5	Phase Lock Voltage
6	Phase Lock Alarm
7	External Reference Input
8	RF Output A
9	RF Output B



Wenzel Associates, Inc.

Austin, Texas

Title:

**100 MHz, 200 MHz & 400 MHz
Multiplied Crystal Oscillator (MXO-PLD)**

P/N:

501-27336

Rev:

-

Date:

11-07-13

Drawn:

Ref:

Tolerances:
(except as noted)
Dimensions are in inches

0.XX Dec:

\pm 0.030"

0.XXX Dec:

\pm 0.010"

FSCM:

62821

Page 1 of 1