

OUTPUT**Frequency**

10 MHz

Level

+13 ±2 dBm into 50 ohms

INPUT**Frequency**

5 or 10 MHz auto select

Level+4 ±3 dBm into 50 ohms
output impedance

Threshold +0 to 1.0 dBm

STABILITY**Aging**1 x 10⁻⁹ per day,
after 24 hours on time**Phase Noise L(f), (no external Signal)**

10 Hz -125 dBc

100 Hz -155 dBc

1 KHz -165 dBc

10 KHz -165 dBc

Temperature Stability±1.5 x 10⁻⁸, 0° to +50°C (Ref +25°C)**MECHANICAL****Dimensions**

2.94 x 1.75 x 1"

Connectors

Input Connector: BNC female

Output Connectors: SMA, and feedthru
capacitor**Packaging**Steel can with gasketed access
screw and threaded inserts on base**POWER REQUIREMENTS****Warm-Up Power**

5 Watts for 5 minutes

Total Power

2 Watts at +25°C

Supply Voltage

+12 VDC

ADJUSTMENT**Mechanical Tuning**±1 x 10⁻⁶, minimum**Electrical Tuning**±1 x 10⁻⁷, ±5 VDC

Negative slope

CRYSTAL**Type**

10 MHz SC-cut

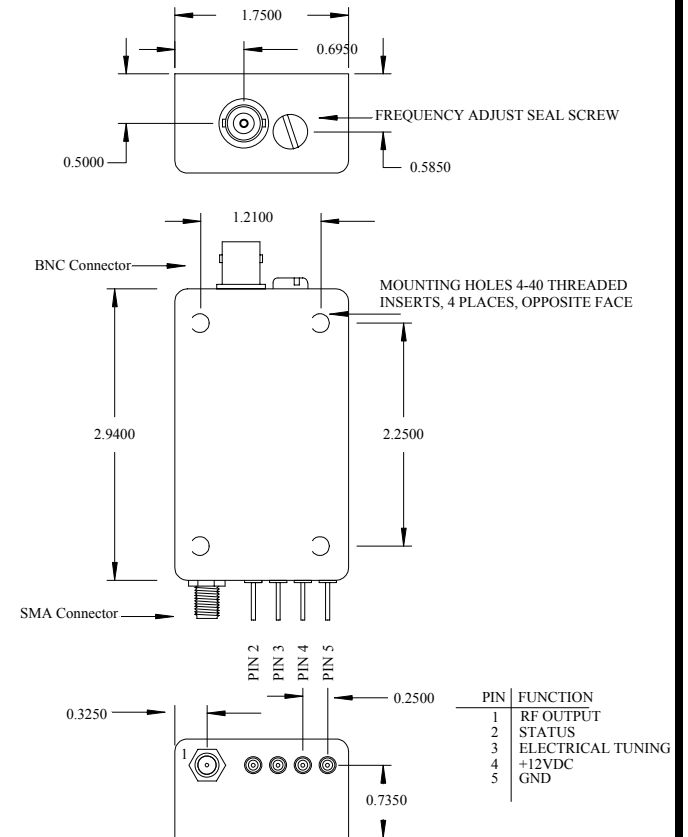
Status Pin

Internal Oscillator "ON": TTL Low (0V)

Internal Oscillator "OFF": TTL High (5V)

OTHER**Switching**Automatic 5 or 10 MHz input drives
Output. Internal reference is
Disabled. No phase locking is
provided

REV	DATE	REVISION RECORD	DWN	AUTH
-	02-01-02	Draft	BH	
A	04-18-02	Supply Voltage in Drawing	PC	BH

**Wenzel Associates, Inc.**

Austin, Texas

Title:

Standard 10 MHz-SC Oscillator with Automatic Switch

P/N:

501-09371

Rev:

A

Date:

04-18-02

Drawn:

Ref:

500-07378Tolerances:
(except as noted)
Dimensions are in inches

0.XX Dec:

±0.030"

0.XXX Dec:

±0.010"

FSCM:

62821

Page 1 of 1